

Sprint Public Safety Solutions

Multi-agency interoperability for Public Safety from GST Optima™

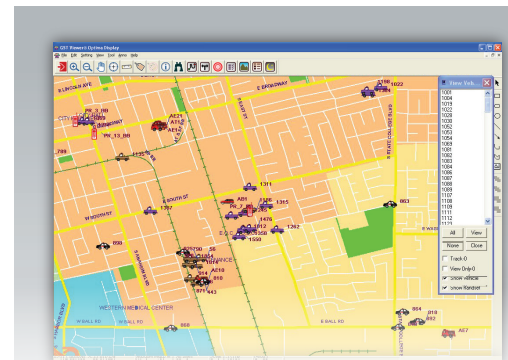
Establishing cross-agency, real-time situational awareness is critical to effective incident management as well as daily resource management.

With GST Optima™, multiple agencies are able to share real-time resource location data in one common operating picture. Incident Commanders on-scene and Dispatchers in a Dispatch Center or Emergency Operating Center (EOC) can view locations of all the vehicles and personnel from the participating agencies on the same map. Sheriff deputies, police officers, and firefighters in the field can also see one another with the same view as what Incident Commanders and Dispatchers see.

Standard Features

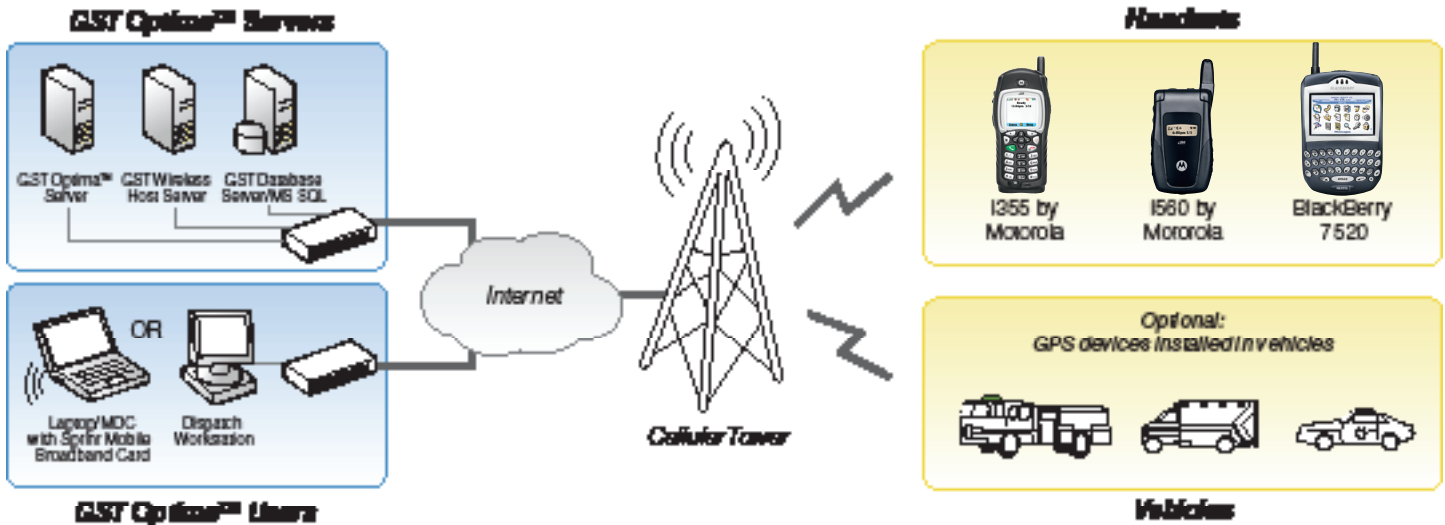
- 1. Real-time tracking of resources,** including persons holding GPS-enabled phones and vehicles installed with GPS navigation devices.
- 2. Generating detailed reports** of activity history of any person or vehicle, and playing back the history on the map either point by point or in a breadcrumb trail.
- 3. Achieving data interoperability** using various wireless communication protocols.
- 4. GST Optima™ State uses the top-quality NAVTEQ state map** with detailed street information, with the coverage extending beyond jurisdiction boundaries. GST Optima™ USA uses Microsoft® MapPoint with national map coverage. Both enabling neighboring agencies to join force and work together with a common map.

- 5. GST Optima™ State provides advanced mapping tools** enabling the use of unlimited GIS data layers, including police facilities, fire stations, fire hydrants, Haz-Mat, public buildings, and others.
- 6. Geo-fence Reporting:** The Dispatcher may draw a polygon on the map to be defined as a special safety zone, and the system will automatically generate reports showing all the mobile units that enter or exit the zone.
- 7. Geo-fence Notification:** Sending e-mails or text messages to incident commanders or supervisors automatically whenever a mobile unit enters or exits the special area delineated on the map.
- 8. Targeted Messaging:** Incident commanders or dispatchers may draw a circle, a rectangle, or a polygon on the map and send text messages to all the phones within the delineated area.



City-wide Interoperability in Anaheim, California

The City of Anaheim has deployed GST Optima™ interoperability system to support daily operations of multiple departments in the City, including Police Department, Fire Department, Public Utilities, Public Works, and Planning Department. While these departments use different devices such as Nextel handsets, Sprint BlackBerry handsets, Sprint ERT phones, GSTTracker® with CDMA modems, and Sprint Mobile Broadband cards. Managers throughout the city are able to see the resources of one or more departments at the same time. Furthermore, GST tracking system is interfaced with both fire dispatch operations and the City's web-based resource management system.



Advanced Features

(Options requiring additional interfaces and data):

- 1. Reverse 911 Notification:** The Dispatcher may draw a circle, a rectangle, or a polygon and all the addresses and/or phone numbers within the delineated area will be listed in a text file for notifications.
- 2. CAD Interface:** With GST Open Interface Utility, real-time incident data received from a Computer Aided Dispatch (CAD) system can be incorporated into the tracking system, thus showing locations of incidents along with resources on the same map.
- 3. E911 Interface:** With GST's E911 Mapper Interface, 911 calls from both landlines and cellular phones can be incorporated into the tracking system.

Interoperability among Multiple Wireless Protocols

With GST Optima™, the incident commanders and dispatcher will be able to see fire fighters holding Nextel handsets, police officers holding Sprint BlackBerry handsets, fire engines installed with GST Tracker® hardware with CDMA modems, and police patrol vehicles with mobile data computers (MDC) using Sprint Mobile Broadband cards, all on the same page in real time.

Interoperability among Multiple Proprietary CAD Systems/Protocols

GST Optima™ overcomes/bridges the traditional technology silos that exist between disparate proprietary CAD systems... This is a huge capability...

Implementation

Three simple steps to implement GST Optima™ to track Nextel devices for your organization: First, fill out the standard information form at www.GSTOptima.com to register your phones to the server. Second, wirelessly download GST Tracker® MT software onto the phone. Third, GST will send you a CD containing GST Optima™ program that comes with either NAVTEQ map covering your state or Microsoft® MapPoint national map. You only need to install the CD on your workstation and the system is up and running.

Contact Information

GeoSpatial Technologies, Inc.
 3130 S. Harbor Blvd. Suite 430
 Santa Ana, CA 92704
 Tel: (714) 434-9936
 Fax: (714) 434-9937
info@geospatialtech.com
www.geospatialtech.com



GEOSPATIAL TECHNOLOGIES, INC.

Coverage not available everywhere. Sprint and Nextel National Networks reach over 262 and 274 million people respectively. Sprint Mobile Broadband Network reaches over 236 million people. GPS Services: Require GPS & Java-enabled device. Environment may limit GPS location info. ©2008 Sprint. Sprint and the logo are trademarks of Sprint. The GST logo and GST Optima are registered trademarks of GeoSpatial Technologies, Inc. Microsoft and Virtual Earth are registered trademarks of Microsoft Corp. Sierra Wireless is a registered trademark of Sierra Wireless Inc. Globalsat is a registered trademark of Globalsat Technology Corporation. Pharos is a registered trademark of Pharos Science & Applications, Inc. Antenna Plus is a registered trademark of Antenna Plus. Holux is a registered trademark of Holux, Inc. and it's listed subsidiaries. AmbiCom is a registered trademark of Ambicom, Inc.