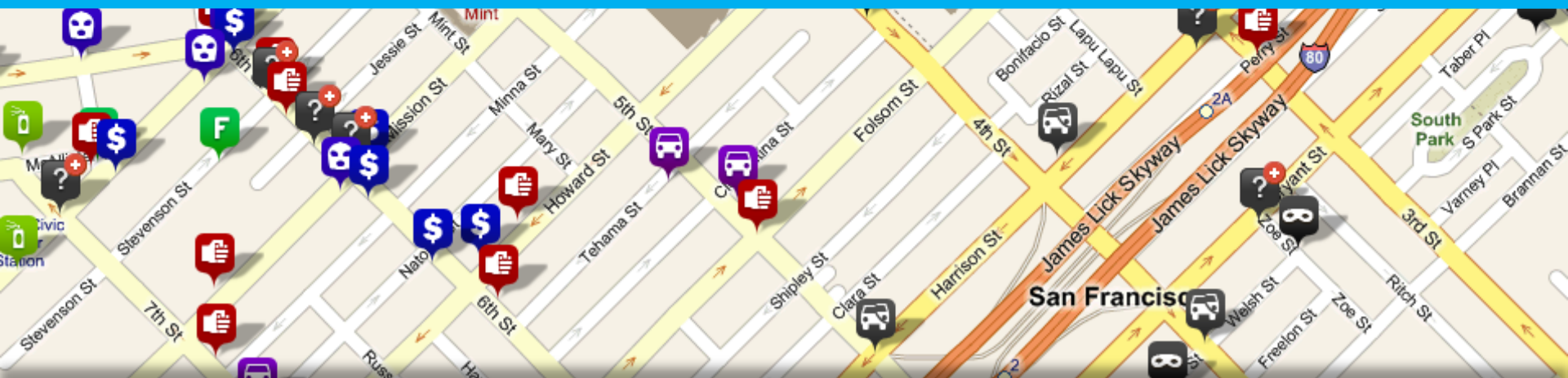




TACTICAL AND STRATEGIC ANALYSIS SOLUTIONS

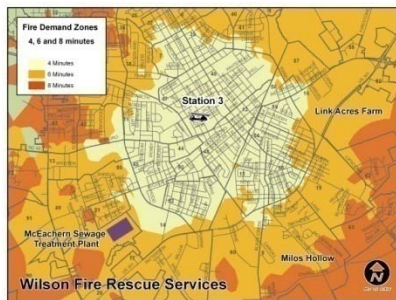
Nick Stohlman



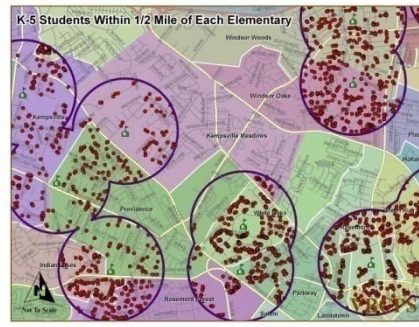


The Omega Group is dedicated to enriching the quality of life in communities by providing solutions for public safety and education agencies.

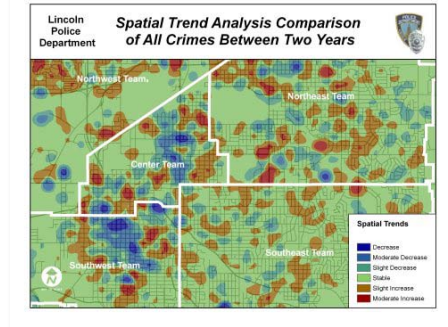
FIRE



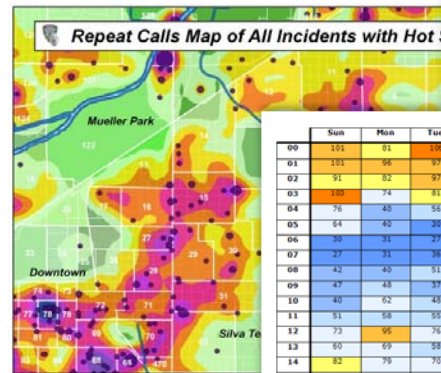
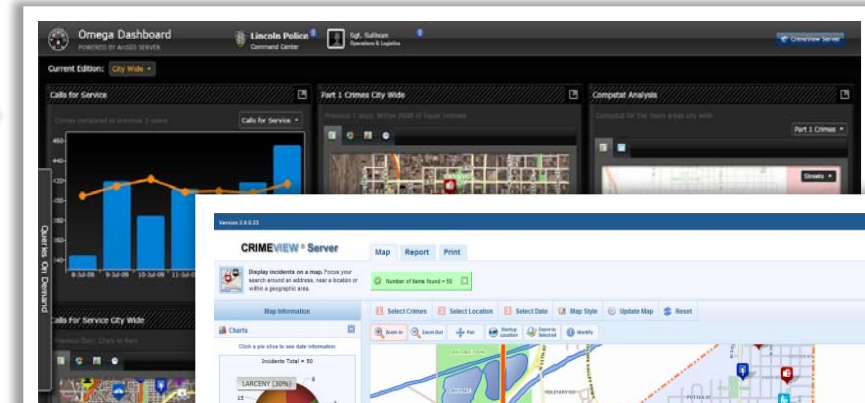
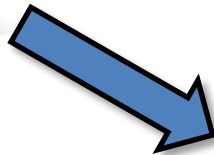
EMS



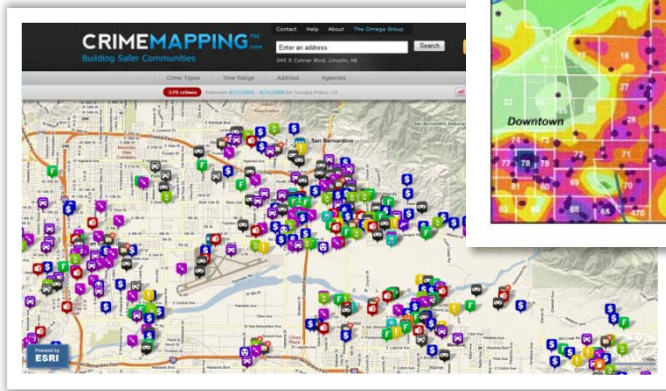
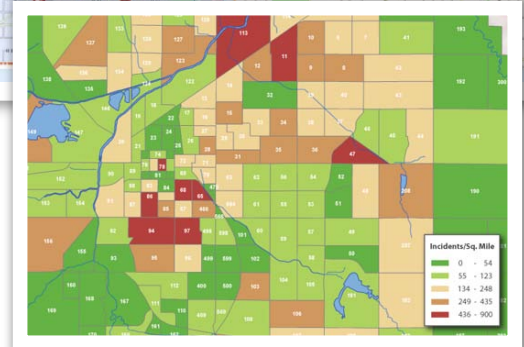
POLICE



RMS
&
CAD



	Sun	Mon	Tue	Wed	Thu	Fri	Sat	Total
00	101	81	100	81	94	87	93	643
01	121	96	97	96	85	88	113	676
02	91	82	97	95	70	93	113	641
03	100	74	81	76	81	72	91	578
04	76	40	56	75	60	37	63	469
05	64	40	30	31	37	34	42	298
06	30	31	27	32	28	28	28	196
07	27	31	36	38	34	41	28	233
08	42	40	51	40	43	41	44	294
09	47	48	37	35	38	46	42	283
10	40	62	48	54	59	56	43	362
11	51	58	55	43	68	53	60	388
12	73	96	76	71	92	99	80	595
13	60	69	58	85	61	67	59	439
14	82	79	70	71	88	82	83	535
15	61	78	80	67	83	82	73	524
16	62	77	85	61	78	71	83	517
17	72	84	84	92	77	90	78	577
18	75	76	85	69	91	85	84	565
19	95	82	100	91	65	92	83	608
20	74	108	100	92	81	94	87	616
21	78	108	88	74	81	91	87	608
22	63	80	71	72	57	97	97	537
23	65	91	78	84	82	78	75	553
Total	1,633	1,711	1,696	1,625	1,627	1,684	1,710	11,686



The Omega Group offers a wide variety of internal as well as external facing analysis solutions.

CRIMEVIEW®

CRIMEVIEW® Server

OMEGA DASHBOARD™

CRIMEVIEW® Community

CRIMEMAPPING.com™

OMEGA PRODUCT

FUNCTIONALITY

CRIMINAL JUSTICE INFRASTRUCTURE



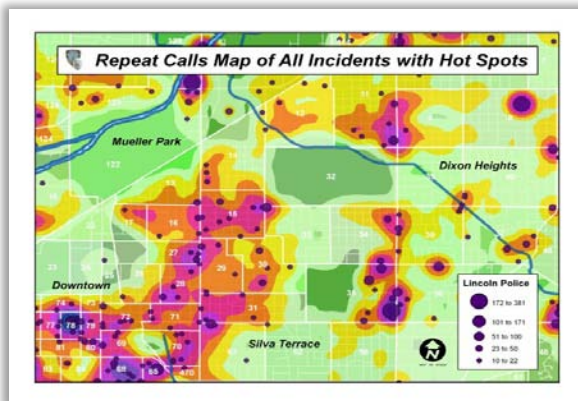
DATA SOURCES

- **Dispatch and 911 Call Centers**
- **Police Reports and Incident Data**
- **Graffiti Reporting Systems**
- **Public Tip Reporting Systems**
- **State Offender Data Centers**
- **Prosecution Records Information**
- **Local/State DNA Database**
- **Field Investigations and Citations**
- **Parolee Tracking Systems**
- **Emergency Response Records**

CRIMEVIEW®

CRIMEVIEW® is the leading desktop software solution for crime mapping in North America. Hundreds of agencies have been able to reduce crime activity through the use of CrimeView.

CrimeView is an advanced interface to your existing CAD and RMS databases. The application specifically addresses the integration of your data in order to effectively query and analyze information in a mapping environment.



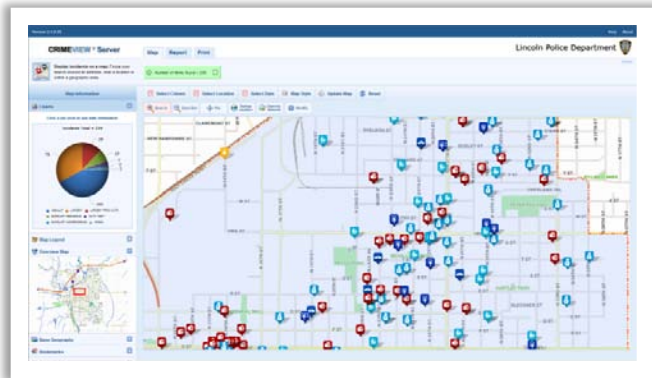
"CrimeView has been the foundation of our crime analysis efforts and continues to be our primary tool as we complete our second successful CrimeView Desktop upgrade. For years, CrimeView has been the primary "data driver" for field supervisors at the beginning of each shift, as well as the source of crime and call information for lieutenants."

Jim Buermann, Chief of Police, Redlands, California

CRIMEVIEW® Server

CRIMEVIEW® Server is an application that allows staff throughout any department to access crime data through the existing internal network (intranet). With one site license, multiple users can simultaneously create maps and reports. Both commanders and field staff can use CrimeView® Server in order to make data driven decisions.

CrimeView® Server can be accessed with a browser at any computer on the intranet, eliminating the need for data or mapping software at individual workstations.



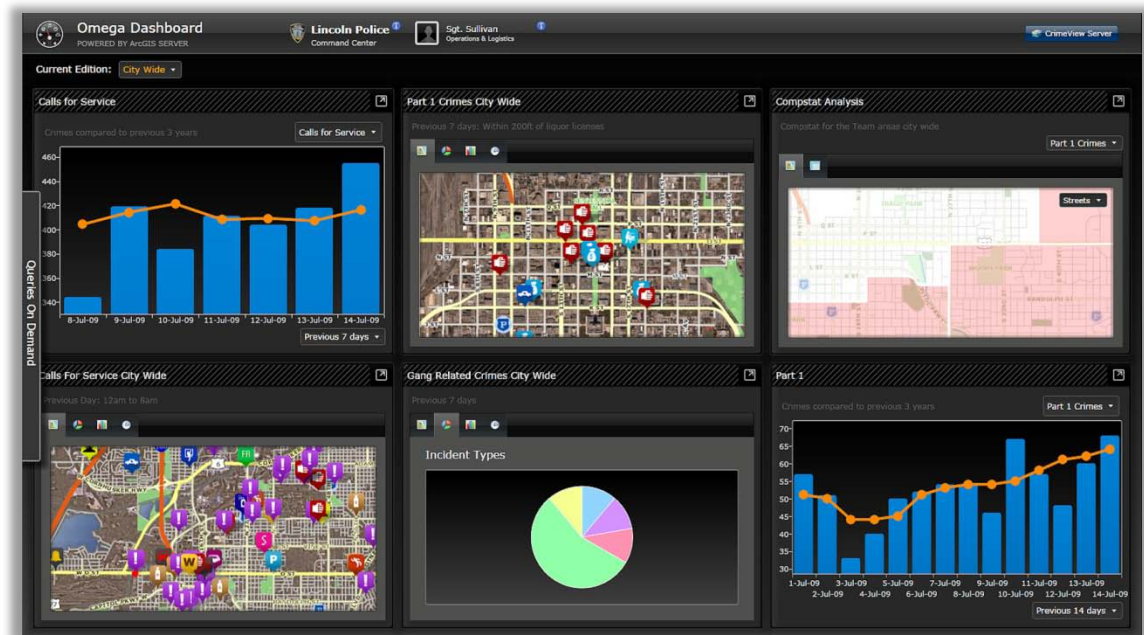
“The CrimeView family of products has become an essential tool set in our community. CrimeView Web gives our employees easy access to crime mapping data 24-hours a day. Any user with an internet connection has the power of a full featured geographic information system at their disposal.”

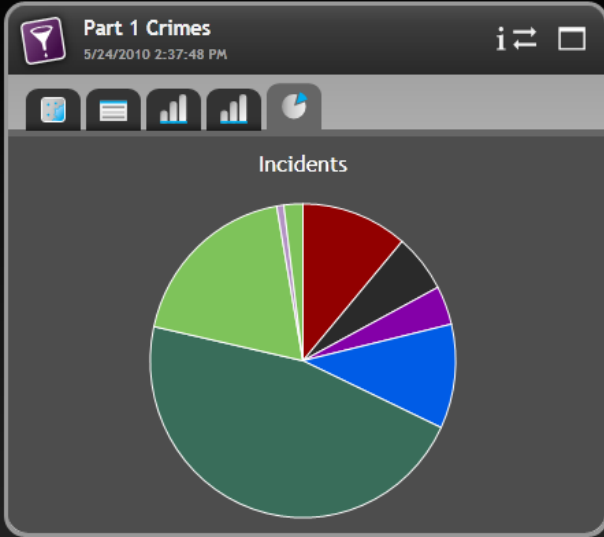
Tom Casady, Chief of Police, Lincoln, Nebraska

OMEGADASHBOARD™

OMEGADASHBOARD™ represents the next generation of resource allocation and management tools for the law enforcement and public safety sectors. Omega Dashboard™ provides users with a timely overview of recent events in the form of reports, maps and charts.

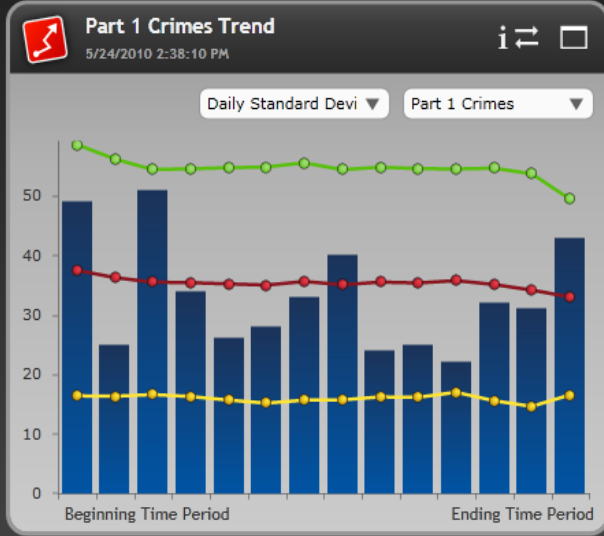
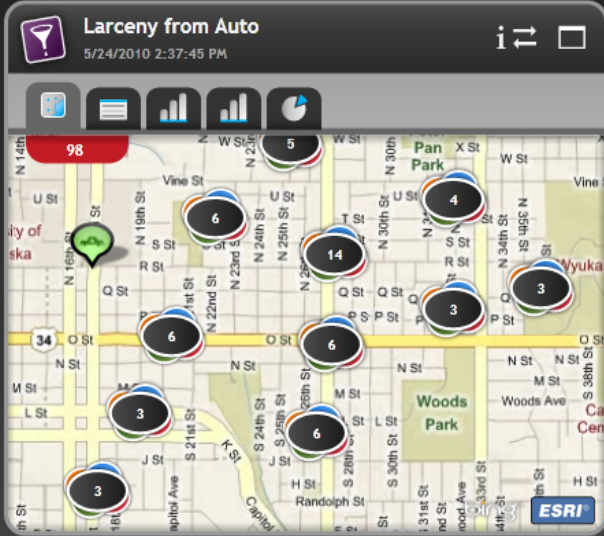
No software is required by the end user as all information is accessed directly through a Web browser. The creation of customized analysis routines is automated so that the information presented is always current.





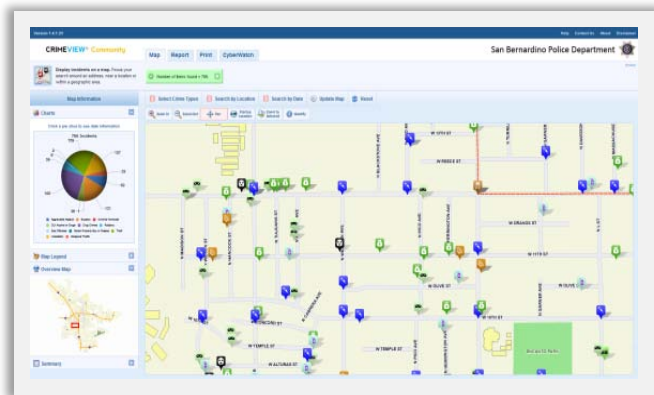
Burglary
 5/24/2010 2:37:47 PM

Address	Comments
2705 N 33RD ST	BRK OUT MIDDLE WINDOW E SIDE OF BUSINE
3221 HUNTINGTON AVE	FRONT DOOR OF BUSINESS PRIED OPEN W/UN
2230 GRIFFITH ST	VACANT HOUSE ENTERED BY UNK MEANS PIPE
2924 MERRILL ST	UNK PTY ENT UNLOCKED GARAGE REMOVED IT
2843 MERRILL ST	ENTERED LOCKED RES BY UNK MEANS/REMOV
2112 N 28TH ST	PR ENTERED HOME/UNLOCKED BACK DOOR/RE
2112 N 28TH ST	ENT:SLIPPED LOCK OVERHEAD DOOR-KICK OP
2825 MERRILL ST	BK DR TO RES LEFT UNLKD UNK PTYS ENT AND
2740 FAIR ST	RES ENTERED THRU UNLOCKED DOOR/ITEMS T
2740 FAIR ST	NO SIGN OF FORCED/DOOR OPEN POSS.W/KEY



CRIMEVIEW® Community

CRIMEVIEW® Community is a browser-based community policing application that enables the public to access crime data in their neighborhoods quickly and easily. With CrimeView® Community you can provide an important public service by giving citizens information that they may ordinarily request directly from your staff. Creating self reliance among community members and alleviating some of your staff's work load, can be of great benefit to any agency and its community outreach.



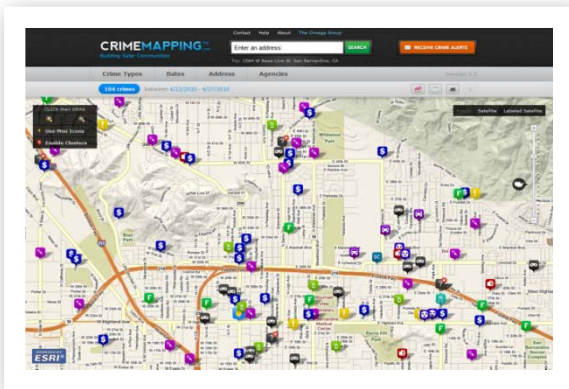
"I wanted to let your company know we are extremely satisfied with your products and customer service. CrimeView Enterprise has already made a significant impact on identifying crime trends for both Crime Analysts and Officers."

Jim Scarberry, Chief of Police, Hollywood, Florida

CRIMEMAPPING.com™

CRIMEMAPPING™ has been developed by to help law enforcement agencies throughout North America provide the public with valuable information about recent crime activity within their neighborhood.

Our goal is to assist police departments in reducing crime through a better informed citizenry. Creating more self reliance among community members is a great benefit to community oriented policing efforts everywhere.



"This is a great service! I am on the board of directors of IMPAC NMB, a local community group and I am also a teacher at the local high school. This information helps me keep abreast of what is going on in the our city so I can keep my eyes and ears open at work. It's amazing what you can accomplish if you know where to look. I truly believe that all cities should get on board."

Resident, Sarasota, Florida

CRIME**MAPPING**TM.com

[Map](#) [Contact](#) [About](#) [Help](#) [Sign Up](#) [Omega](#)

What's your address?

SEARCH

Choose an agency:

Choose a state:

PICK ANY
STATE TO
BEGIN →



Connect with us on Facebook



Follow us on Twitter

RELATED LINKS

- [Receive Crime Alerts!](#)
- [Help](#)
- [Symbol Legend](#)
- [F.A.Q](#)

CORPORATE BITS

- [Contact Us](#)
- [Disclaimer](#)
- [Press](#)

Building Safer Communities

This portal is dedicated to helping law enforcement agencies provide the public with valuable information about crime activity by neighborhood. Our goal is to assist police departments in reducing crime through a better informed citizenry. We work directly with each agency and never scrape data from other sites!

THE OMEGA GROUP

We have been working with law enforcement agencies throughout North America since 1992. Hundreds of police and sheriff's departments are currently using one of our [solutions](#) for their intelligence led policing needs. Find out more about us, [here](#).

FUTURE VISION



- Optimize Officer Allocation
- Enhance Public Safety
- Improve Communications
- Establish a Common Operating Picture
- Assist Emergency Response
- REDUCE CRIME IN YOUR COMMUNITY!



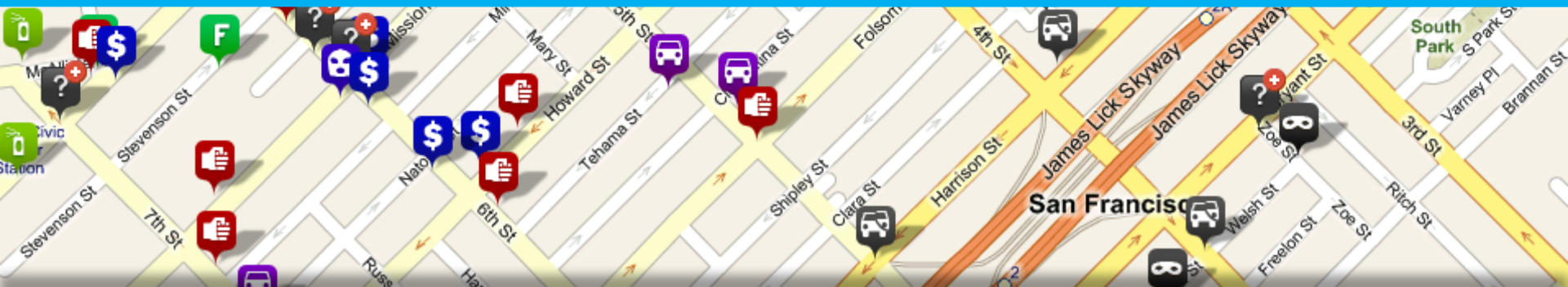


Q & A

E-mail: sales@theomegagroup.com

Toll-free: (800) 228-1059

Web: www.theomegagroup.com



DEMONSTRATION