


A modern office interior with large windows and people sitting in chairs. The scene is bright and airy, with a high ceiling and large columns. Three people are seated in black chairs around a small table, engaged in conversation. The floor is highly reflective, mirroring the people and the furniture. The overall atmosphere is professional and collaborative.

# AT&T Mobile Security

## Advanced Protection Throughout Your Network

July 2012

© 2012 AT&T Intellectual Property. All rights reserved. AT&T, the AT&T logo and all other AT&T marks contained herein are trademarks of AT&T Intellectual Property and/or AT&T affiliated companies. All other marks contained herein are the property of their respective owners.

Rethink Possible® 

# Why consider mobile security?

## The Risk

Personal mobile devices connected to the enterprise have brought new options to employees while simultaneously broadening the number and types of devices accessing your corporate network, and putting your sensitive data, processes, and tools at risk

### Security Risks of an Unprotected Mobile Inventory

- Data Loss
- Mobile Threats
- Legal, Regulatory and Compliance Risks



# Mobile Security Challenges



## Malware

Viruses, Worms, Trojans, Spyware



## Loss and Theft

Loss or inappropriate access of sensitive data



## Data Communication Interception

Sniffing data as it is transmitted and received



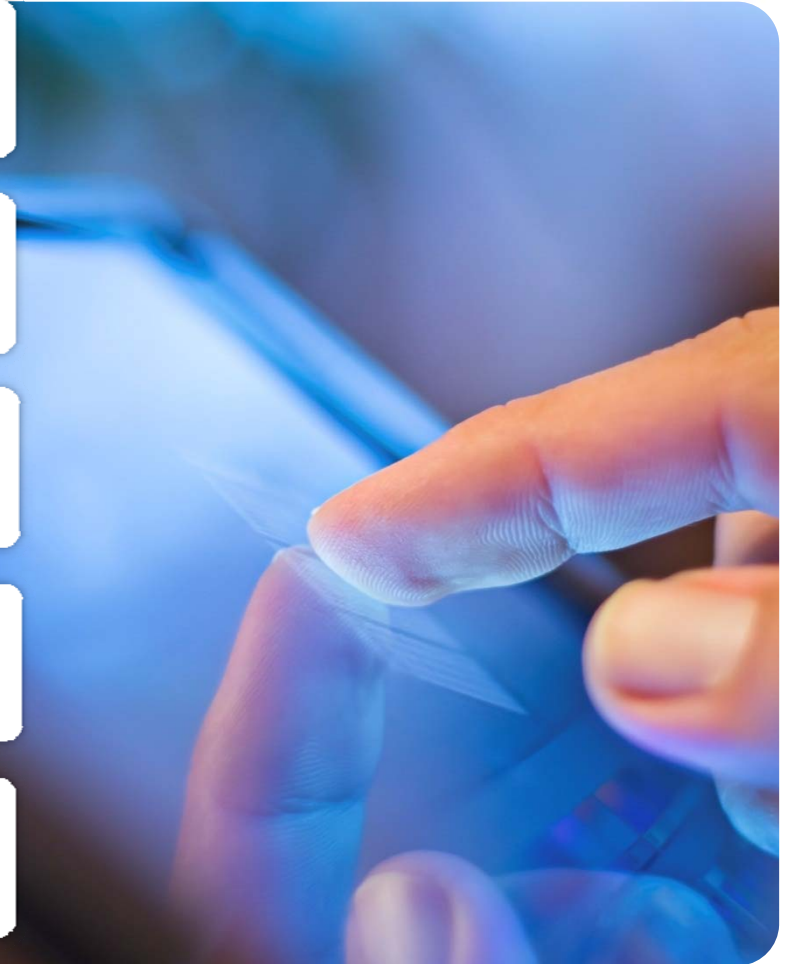
## Exploitation and Misconduct

Online predators, inappropriate sites and communications, data leakage



## Direct Attacks

Attacking device interfaces, Network DoS, Malicious SMS



# Business Challenges

## Smartphone user behavior and expectations

**89%**

Business users accessing critical work data from their personal mobile device<sup>1</sup>

**1.19BILLION**

Worldwide mobile worker population by end of 2013<sup>2</sup>

**41%**

Business users using personal device for work without company permission/knowledge<sup>1</sup>

**35%**

World's workforce expected to be mobile by end of 2013<sup>2</sup>

**30%**

IT pros whose company has experienced security threat due to a personal mobile device<sup>1</sup>

**32%**

IT Pros concerned personal mobile devices introducing malware<sup>1</sup>

**41%**

IT pros concerned about security breaches due to lost or stolen mobile devices<sup>1</sup>

**155%**

Mobile Malware increase from 2010 to 2011<sup>3</sup>

### SOURCE:

<sup>1</sup>Juniper Networks' Trusted Mobility Index

<sup>2</sup>IDC

<sup>3</sup>Juniper Networks' 2011 Mobile Threat Report

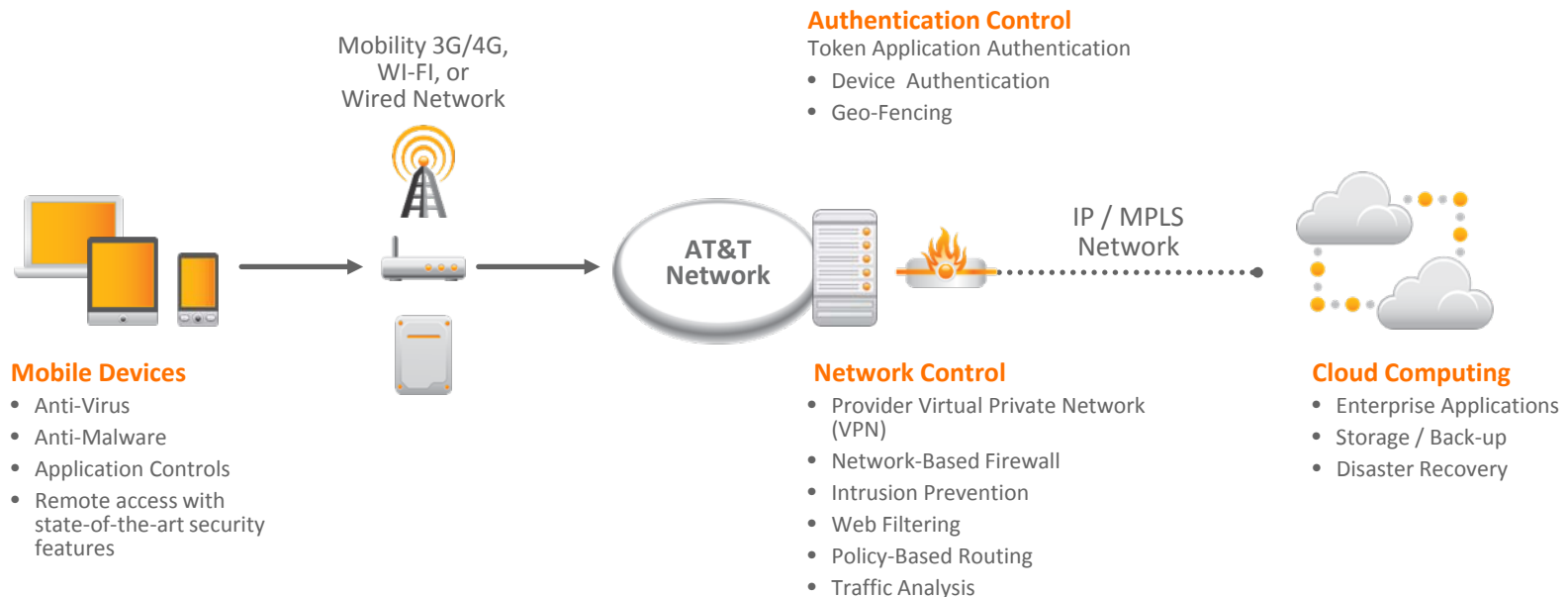


# AT&T Mobile Security Solution



Deploy an application on mobile devices that includes network-based, carrier-grade protection (Carrier Agnostic)

- Downloads to the mobile device to help protect its connection to the Internet providing multi-layer security and device management capabilities
- Integrates device-level security features with network-based security controls and encrypted transport for a comprehensive solution
- Botnet, Anti-virus, Anti-malware, Malicious Application mitigation to help enforce your security policies



# AT&T Mobile Security

## Features

- Anti-virus, Anti-malware , Malicious application mitigation
- Root/Jailbreak detection
- Scans files received over network connections
- Network-Based Firewall monitors Inbound , outbound traffic
- BotNet Black list and White list filtering
- Network Security Controls
- Loss or theft protection
- Customer Administrative Portal

## Benefits

- Real time virus, malware, malicious application protection
- Detects rooted or “jailbroken” devices, prohibits connection to the network
- Helps protect from threats delivered via SMS, MMS, Bluetooth, Wi-Fi, 2.5G, 3G, 4G, infrared or desktop sync
- Safe guards device from accessing harmful content, prevents malicious content from transferring to the device
- Blocks device from accessing known malicious sites, and permits access to clean sites
- Extends wireline network security policies to wireless endpoints; Connectivity to AT&T Remote Access Services, AT&T VPN services, and AT&T Secure Network Gateway for added security
- Remotely locates & locks and wipes the device contents
- Enables device management, registration and control over your security policy from a central location



# Mobile Security helps you....

Provide key features to address security concerns

- Extend, help protect and synchronize security controls and policies across wireline and wireless environments to ease compliance
- Helps protect network and mobile devices with anti-virus and anti-malware
- Identify and block botnets
- Restrict mobile access to unauthorized sites
- Administrator controls security policies in the network, with AT&T managing the infrastructure, licenses, patches and support



*Rethink Possible*<sup>®</sup>

